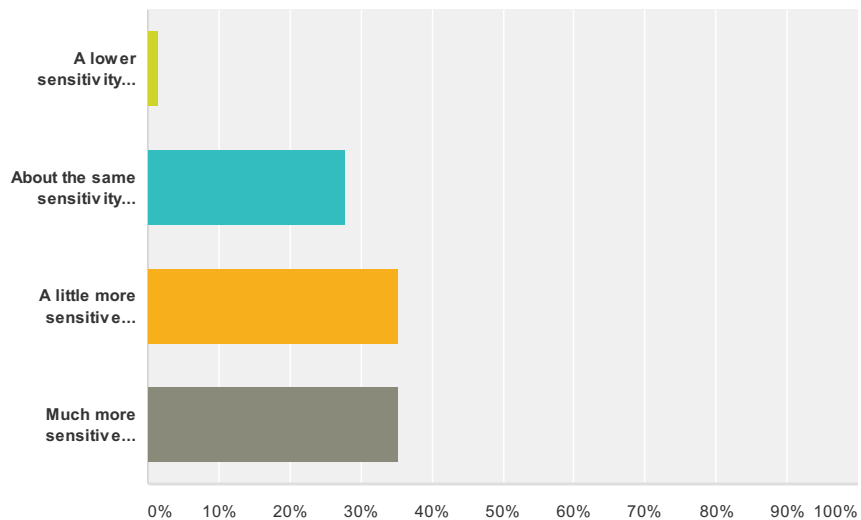


Q1 In regards to hearing or sound for your EGID child (or yourself), how would you rate yours (or your child's) sensitivity to noise?

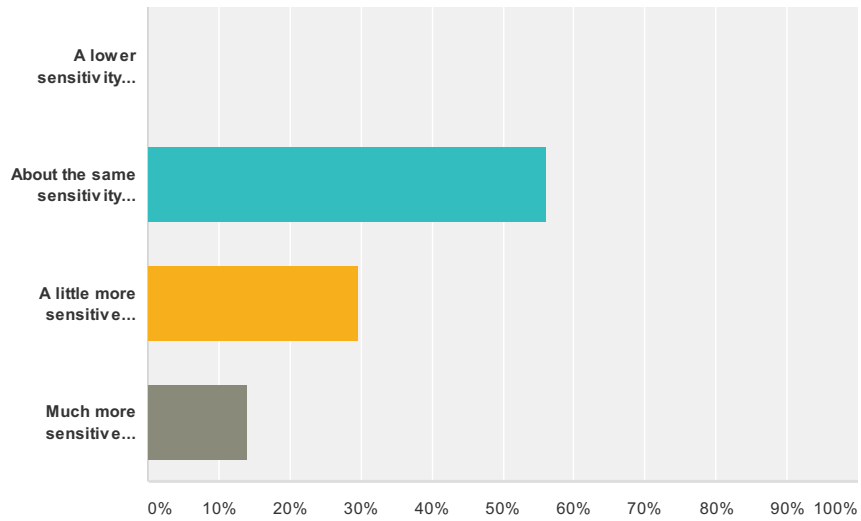
Answered: 65 Skipped: 0



Answer Choices	Responses
A lower sensitivity compared to others without EGIDs	1.54% 1
About the same sensitivity compared to others without EGIDs	27.69% 18
A little more sensitive compared to others without EGIDs	35.38% 23
Much more sensitive compared to others without EGIDs	35.38% 23
Total	65

Q2 In regards to light (brightness) for your EGID child (or yourself), how would you rate yours (or your childs) sensitivity?

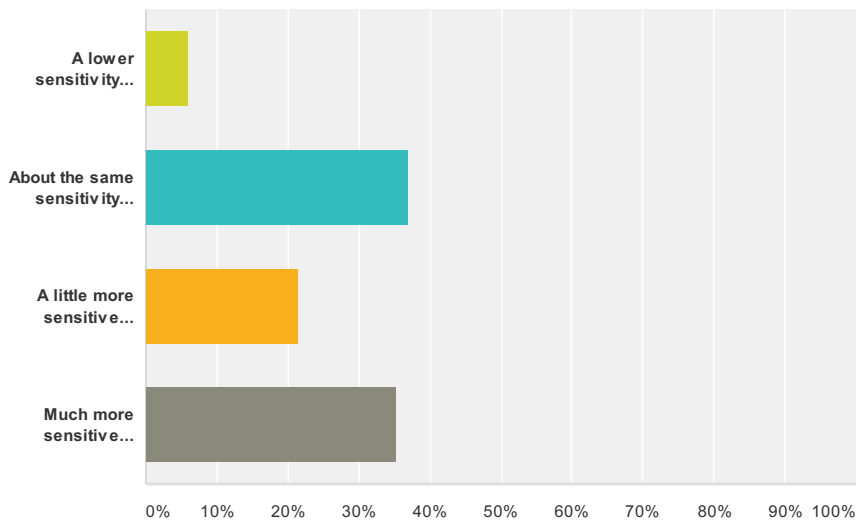
Answered: 64 Skipped: 1



Answer Choices	Responses
A lower sensitivity compared to others without EGIDs	0.00% 0
About the same sensitivity compared to others without EGIDs	56.25% 36
A little more sensitive compared to others without EGIDs	29.69% 19
Much more sensitive compared to others without EGIDs	14.06% 9
Total	64

Q3 In regards to temperature (hot or cold) for your EGID child (or yourself), how would you rate yours (or your childs) sensitivity?

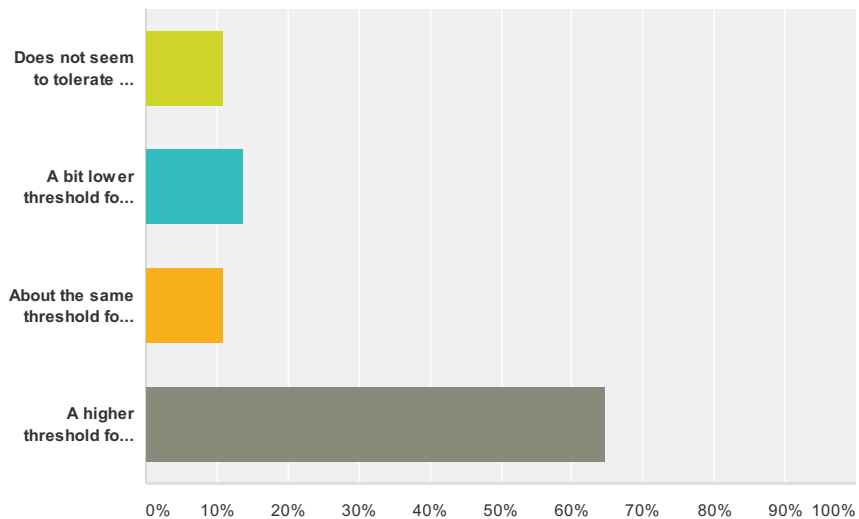
Answered: 65 Skipped: 0



Answer Choices	Responses
A lower sensitivity compared to others without EGIDs	6.15% 4
About the same sensitivity compared to others without EGIDs	36.92% 24
A little more sensitive compared to others without EGIDs	21.54% 14
Much more sensitive compared to others without EGIDs	35.38% 23
Total	65

Q4 In regards to physical pain for your EGID child (or yourself), how would you rate yours (or your childs) pain threshold?

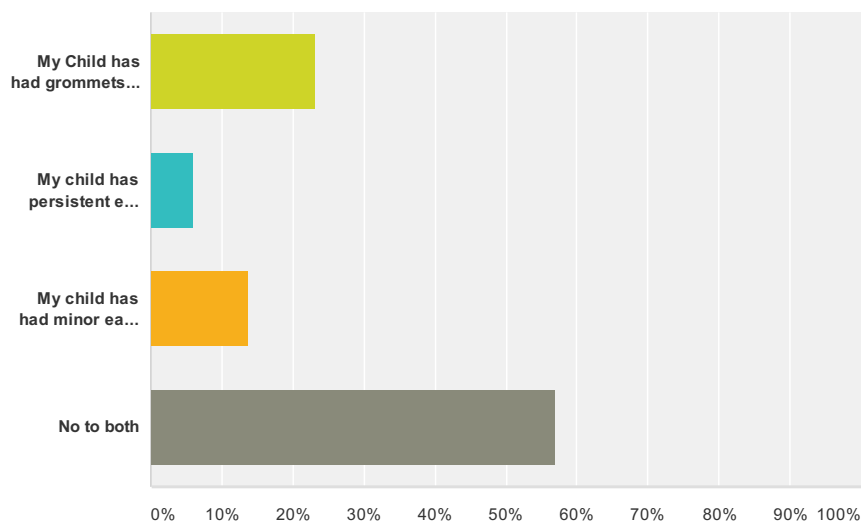
Answered: 65 Skipped: 0



Answer Choices	Responses
Does not seem to tolerate any pain well.	10.77% 7
A bit lower threshold for pain compared to others without EGIDs	13.85% 9
About the same threshold for pain compared to others without EGIDs	10.77% 7
A higher threshold for pain compared to others without EGIDs	64.62% 42
Total	65

Q5 Has your EGID child had grommets or multiple ear infections?

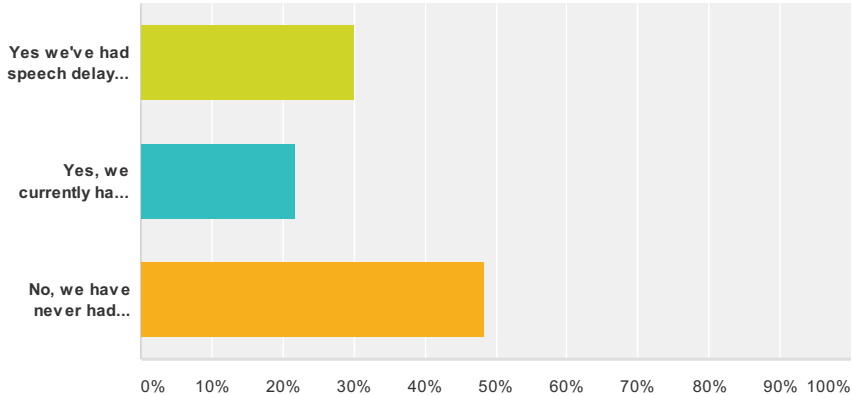
Answered: 65 Skipped: 0



Answer Choices	Responses
My Child has had grommets inserted	23.08% 15
My child has persistent ear infections, but has not had grommets inserted.	6.15% 4
My child has had minor ear infections, but has not had grommets inserted.	13.85% 9
No to both	56.92% 37
Total	65

Q6 Do you or your child have speech delays?

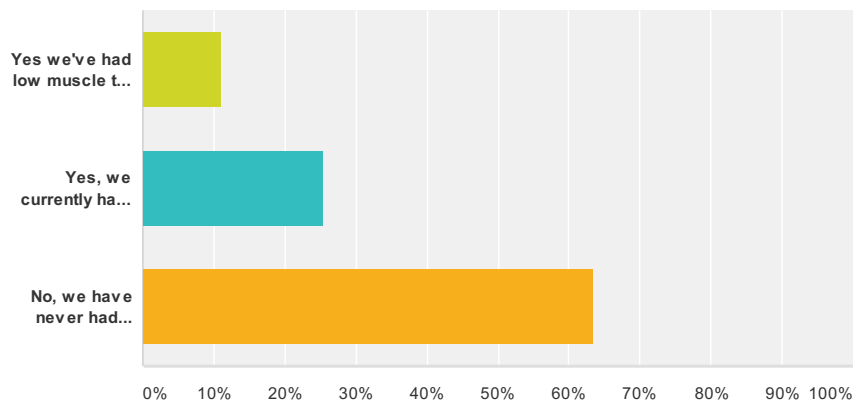
Answered: 60 Skipped: 5



Answer Choices	Responses
Yes we've had speech delays in the past but it is corrected now.	30.00% 18
Yes, we currently have speech delays and are in therapy	21.67% 13
No, we have never had speech delays	48.33% 29
Total	60

Q7 Do you or your EGID child have low muscle tone?

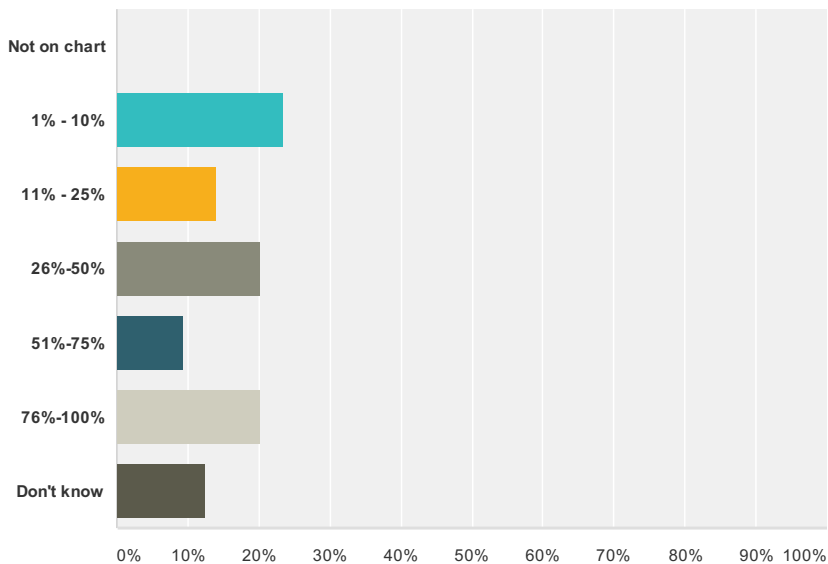
Answered: 63 Skipped: 2



Answer Choices	Responses
Yes we've had low muscle tone in the past but it is corrected now.	11.11% 7
Yes, we currently have low muscle tone.	25.40% 16
No, we have never had problems with low muscle tone.	63.49% 40
Total	63

Q8 For weight, what percentile are you or your child? (Every state/territory is different so please refer to the growth charts in your blue book or the ones that you and your hospital or physician follow)

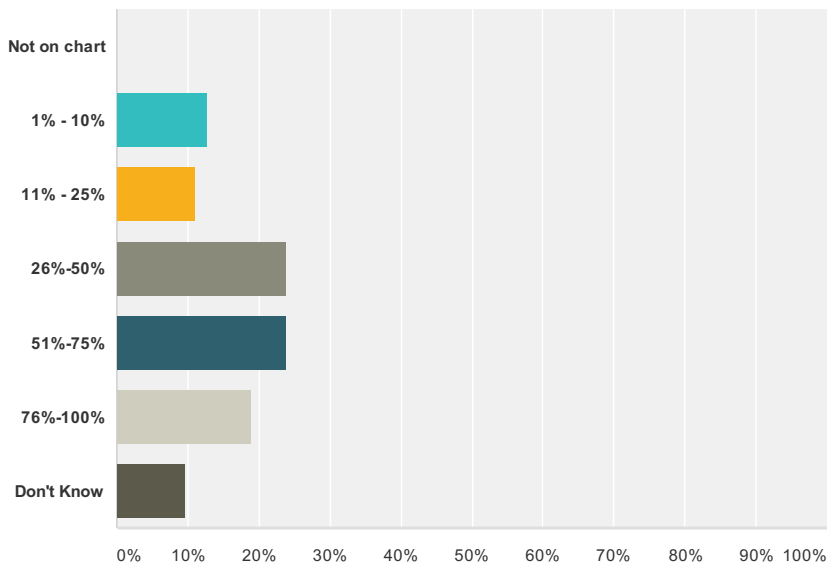
Answered: 64 Skipped: 1



Answer Choices	Responses
Not on chart	0.00% 0
1% - 10%	23.44% 15
11% - 25%	14.06% 9
26%-50%	20.31% 13
51%-75%	9.38% 6
76%-100%	20.31% 13
Don't know	12.50% 8
Total	64

Q9 For height, what percentile are you or your child? (Every state/territory is different so please refer to the growth charts in your blue book or the ones that you and your hospital or physician follow)

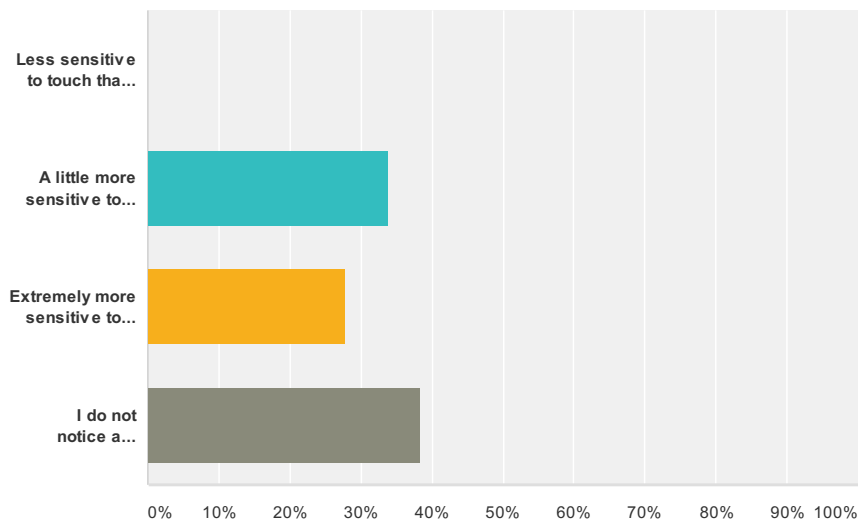
Answered: 63 Skipped: 2



Answer Choices	Responses
Not on chart	0.00% 0
1% - 10%	12.70% 8
11% - 25%	11.11% 7
26%-50%	23.81% 15
51%-75%	23.81% 15
76%-100%	19.05% 12
Don't Know	9.52% 6
Total	63

Q10 In regards to touch, do you feel like your EGID child (or yourself) are:

Answered: 65 Skipped: 0



Answer Choices	Responses
Less sensitive to touch than others with EGIDs	0.00% 0
A little more sensitive to touch than others with EGIDs	33.85% 22
Extremely more sensitive to touch than others with EGIDs	27.69% 18
I do not notice a difference compared to others	38.46% 25
Total	65